

Momentum MSCA

Postdoctoral Fellowship Programme

Call 2 Application Guide & Live Q&A Webinar

11 December 2025



Momentum MSCA Postdoctoral Fellowship Programme (Momentum PPDF) has received funding from the European Union's research and innovation programme under the HORIZON-MSCA-2023-COFUND grant agreement no 101179854.

- Introduction to Momentum MSCA Programme
- Research opportunities
- Application process step by step
- Questions and answers

„Your Research. Your Momentum.”

Call: HORIZON-MSCA-2023-COFUND-01

Project ID: 101179854 — MOMENTUM PPDF

Programme name: Momentum MSCA Premium
Postdoctoral Fellowship Programme

Project starting date: 1 January 2025

Project end date: 31 December 2029

Beneficiary: Secretariat of MTA, Hungarian
Academy of Sciences

Programme Coordinator: Árvácska Sárpátki,
Head of Department of Grant Management

Project Manager: Annamária Kelemen

Programme Officer: Diana Kozsík

Programme Officer: Eszter Jakab

Part of [Horizon Europe](#), the MSCA are the European Union's flagship funding programme for doctoral education and postdoctoral training of researchers.

The [Marie Skłodowska-Curie Actions](#) fund excellent research and innovation, equip researchers at all stages of their career with new knowledge and skills, through mobility across borders and exposure to different sectors and disciplines.

The principles underlying MSCA programme are

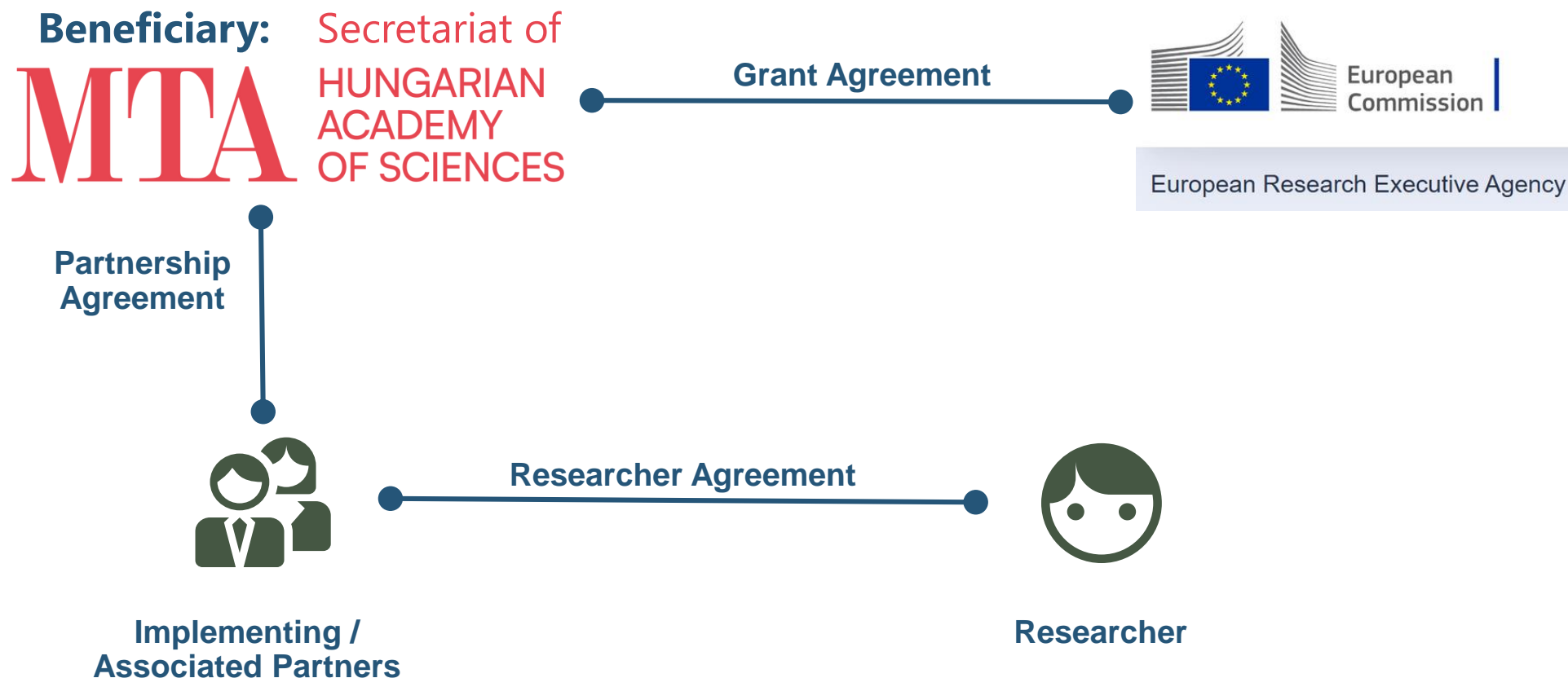
- Excellence
- Mobility
- Bottom-up and open to the world
- Excellent recruitment, working conditions and inclusiveness
- Effective supervision and career guidance
- Open science and responsible research and innovation
- European Green Deal
- Synergies

MSCA-funded programmes operate under **a defined set of common rules and eligibility criteria** - such as researcher mobility requirements, programme duration, and career stage - **to ensure consistency and excellence across** all participating initiatives.

COFUND: provides funding for regional, national and international doctoral and postdoctoral programmes for training and career development, through co-funding mechanisms.

Main Actors in Programme

Co-funded by the European Union, under HORIZON-MSCA-2023-COFUND and Secretariat of MTA,
Grant Agreement no 101179854.



▶ Hungarian Academy of Sciences

- Founded ~200 years ago, the **Hungarian Academy of Sciences (MTA)** is dedicated to advancing scientific research, promoting innovation, and fostering the dissemination of knowledge.
- As both a scientific advocacy organization and a research funding institution, the MTA supports Hungary's research community while influencing national and international science policy.

▶ „Lendület”, Momentum Research Groups

- The flagship research programme of the Hungarian Academy of Sciences (MTA), **launched in 2009**.
- Aimed at supporting **top scientists to establish independent research groups** across Hungary's academic landscape.
- Targets to strengthen the Hungarian young researcher base by attracting and retaining internationally outstanding researchers and young talent from abroad.

▶ Key Characteristics

- Competitive, multidisciplinary funding inspired by the European Research Council (ERC).
- 5-year grants with full research autonomy.
- Network of 280+ research groups in diverse fields.
- Covers a wide range of disciplines, including Natural Sciences, Engineering and Technology, Social Sciences and Humanities, Medical Sciences

▶ Impact and Results

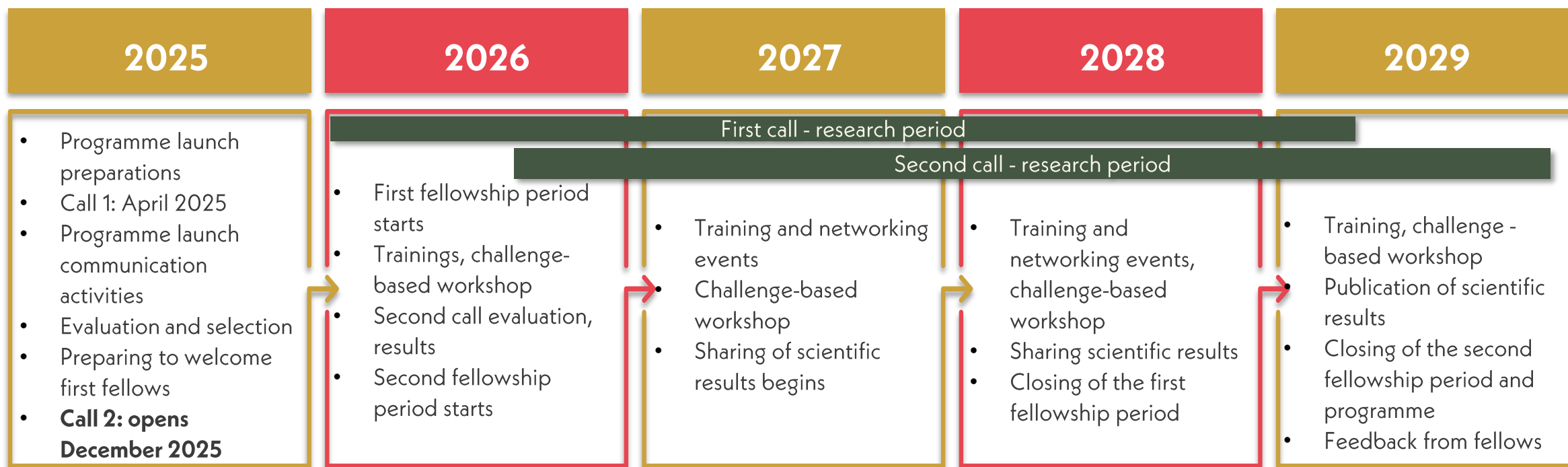
- Contributes to ~20% of Hungary's publications in fields like Space Science and Molecular Biology.
- Scientific impact is comparable to that of the League of European Research Universities (LERU), an organization with 24 member universities.
- Produced academic leaders: 4 current directors of host institutions are former Momentum PIs.

Purpose of Momentum MSCA Programme

- Provide **postdoctoral researchers with the opportunity to further develop their careers** within the dynamic research environment of "Lendület,, Momentum research groups;
- **Enhance the international visibility and impact** of the "Lendület,, Momentum Programme;
- **Foster the growth** of robust research, development, and innovation RDI ecosystems at the local, regional, and international levels; and
- **Strengthen interdisciplinary collaboration** and cooperation among researchers across various fields and sectors.

The Momentum MSCA Postdoctoral Fellowship Programme (Momentum PPDF) is a 5-year COFUND programme, that supports the incoming mobility of outstanding postdoctoral researchers.

- 2 calls for proposals, altogether 35 postdoctoral fellow positions, **Mobility rule**
- Duration of fellowships is **minimum 12 months** and **maximum 36 months, including secondment periods**
- Hosts: participating „Lendület” **Momentum research groups, located in Hungary** (Budapest, Debrecen, Szeged)



Requirements During the Programme

- **Full-time commitment*** of 40 hours per week dedicated to the programme, to be fulfilled in Hungary
- **International secondment** required for a period of 1-3 months
- **Mandatory participation** in at least 3 network-wide training events, including 2 required topics
- **Development and maintenance** of individual Career Development Plan and Data Management Plan
- **Publication of research** through high-impact scientific journals, conferences, and other scientific events, with regular updates provided to the Momentum MSCA Programme Team
- **Active participation** in minimum two international conferences, including poster sessions and research presentations
- **Open-access publishing** of research findings through open-access journals or repositories/pre-print servers
- **Adherence** to local laws and host institution policies throughout the fellowship period

*It is possible to request temporarily, part-time employment for personal and family reasons or for professional reasons to pursue supplementary activities, such as creating a company, pursuing another research project, or engaging in advanced studies not related to the Momentum MSCA grant, in any case without jeopardizing the researcher's training activities funded under COFUND and need to work on the project at least 50% (= at least 20 hours / week).

Why Choose Momentum MSCA Programme?

- **Diverse research areas:** From Engineering & Technology, Humanities to Natural and Social Sciences, Momentum MSCA Postdoctoral Fellowship Programme supports a broad spectrum of disciplines within "Lendület" Momentum Research Groups.
- **Personal and professional development:** Benefit from a comprehensive development package, including supervision, mentoring, and access to specialized training programs. Interdisciplinary workshops and networking events are tailored to enhance your versatility and employability in academia and beyond.
- **International mobility:** Broaden your horizons with opportunities for fellowships and secondments at leading Hungarian and international research centres and industrial partners.
- **Competitive funding:** Enjoy a competitive salary, complemented by mobility, family, relocation allowances based on eligibility. Additional support is available for special needs.
- **Safe and accessible:** Hungary is known for its welcoming environment, offers accessible healthcare, an emphasis on public safety, and a cost of living that is often considered affordable. It offers a favourable destination for researchers and their families seeking a comfortable and enriching experience.



CALL 2 - HOST RESEARCH GROUPS

[Link to Website](#) for group profiles

Mathematics and Natural Sciences	MTA–BME Lendület "Momentum" Quantum Chemistry Research Group	MTA–HUN-REN SZBK Lendület "Momentum" Gene Technology Research Group	Life Sciences	MTA–HUN-REN ÁTKI Lendület "Momentum" Mycoplasma Research Group
	MTA–BME Lendület "Momentum" Carborane Chemistry Research Group	MTA–HUN-REN SZBK Lendület "Momentum" Translational Lab-on-a-Chip Models Group		MTA–HUN-REN SZBK Lendület "Momentum" Systems Biology of Antibiotic Action Research Group
	MTA–ELTE "Momentum" Molecular Quantum Electrodynamics Research Group	MTA–HUN-REN SZBK Lendület "Momentum" Systems Immunology Research Group		MTA–HUN-REN ÖK Lendület "Momentum" Landscape and Conservation Ecology Research Group
	MTA–ELTE Lendület "Momentum" Borel Combinatorics and Complexity Research Group	MTA–HUN-REN ÖK "Momentum" Dispersal Ecology Research Group		MTA–HUN-REN BRC "Momentum" Laboratory for Molecular Photobioenergetics
	MTA–BME Lendület "Momentum" Open Quantum Systems Research Group	MTA–HUN-REN TTK "Momentum" DNA Repair Research Group		MTA–HUN-REN BRC "Momentum" Lysosomal Degradation Research Group
	MTA–ELTE Lendület "Momentum" Catalysis and Organic Synthesis Research Group	MTA–HCEMM Lendület "Momentum" Cancer Genomics and Epigenetics Research Group (tbc)		MTA–HUN-REN BTK "Momentum" Bioarchaeology Research Group
	MTA–BME "Momentum" Sustainable Polymers Research Group	MTA–HUN-REN RI "Momentum" Arithmetic Combinatorics Research Group		MTA–OOI Lendület "Momentum" Hereditary Cancers Systems Biology Research Group (tbc)
	MTA–BME Lendület "Momentum" Global Dynamics Research Group	MTA–HUN-REN RI Lendület "Momentum" Automorphic Research Group		MTA–HUN-REN CER "Momentum" Fluvial Ecology Research Group
	MTA–BME Lendület "Momentum" Machine Tool Vibration Research Group	MTA–HUN-REN TTK "Momentum" Chemical Biology Research Group	Humanities and Social Sciences	MTA–ELTE Lendület "Momentum" Research Group of Liturgical History
	MTA–HUN-REN CSFK "Momentum" Pannonian Volcano Research Group	MTA–HUN-REN WFK Lendület "Momentum" Semiconductor Nanostructures Research Group		MTA–HUN-REN KRTK "Momentum" Agglomeration, Networks, and Innovation Research Group
	MTA–ELTE Lendület "Momentum" NewQubit Research Group	MTA–HUN-REN EK "Momentum" Topology in Nanomaterials Research Group		MTA–HUN-REN TK "Momentum" Algorithmic Constitutionalism Research Group
	MTA–HUN-REN RI Lendület "Momentum" Quantum Computing Research Group	MTA–HUN-REN FI Lendület "Momentum" FluidsByDepth Research Group		MTA–HUN-REN TK "Momentum" PRiSMa Research Group
	MTA–HUN-REN EK Lendület "Momentum" Nanobiosensorics Research Group	MTA–ELTE Lendület "Momentum" Strongly Interacting Matter Research Group		MTA–ELTE Lendület "Momentum" Mixed Research Group
	MTA–BME Lendület "Momentum" High-performance Composite Metal Foams Research Group	MTA–HUN-REN TTK "Momentum" Glycan Biomarker Research Group		MTA–HUN-REN TK Lendület "Momentum" V-SHIFT Research Group
	MTA–BME Lendület "Momentum" Renewable Energy Systems Research Group	MTA–HUN-REN CSFK Lendület "Momentum" Large-scale Structure Research Group		MTA–ELTE KRTK Lendület "Momentum" Technology, Tasks and Inequality Research Group
	MTA–HUN-REN CSFK "Momentum" Nuclear Burning in Stars Research Group	MTA–HUN-REN CSFK Lendület "Momentum" Stellar Pulsation Research Group		MTA–ELTE HTK Lendület "Momentum" BASES Research Group
				MTA–ELTE HTK Lendület "Momentum" Work Research Group

„Your Growth. Your Momentum.“

Research-Specific Skills

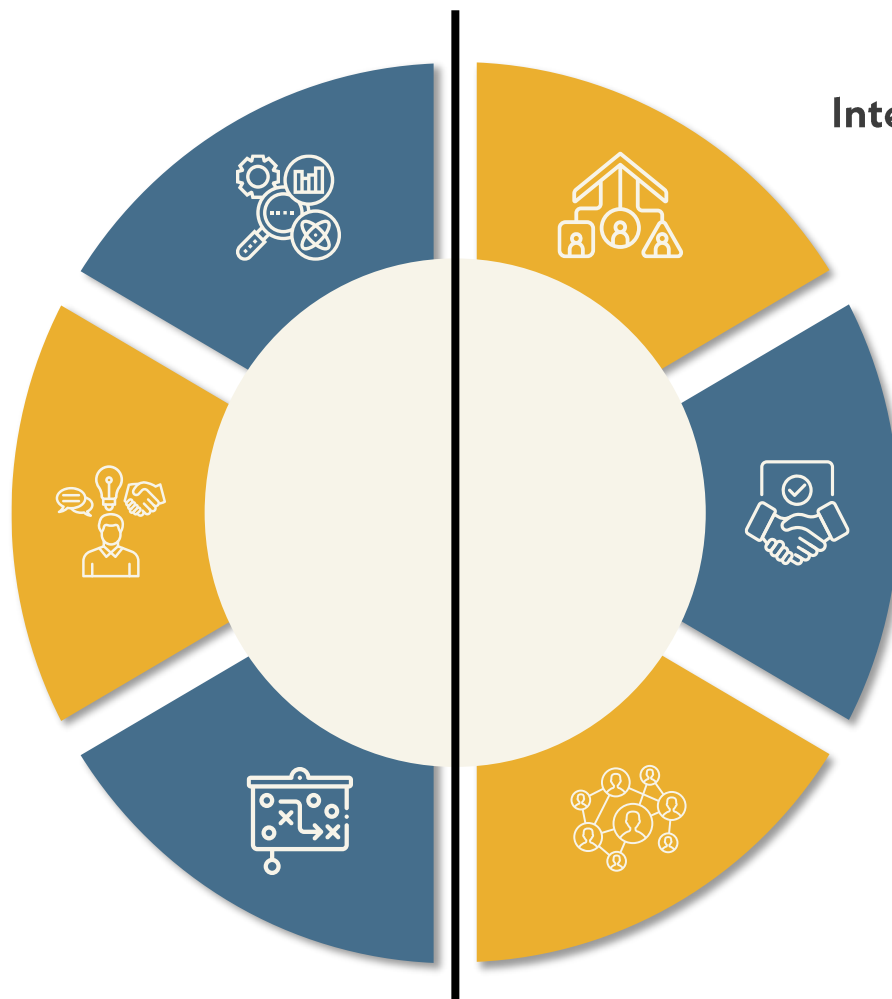
Equip fellows with advanced scientific knowledge and methodologies relevant to their disciplines while fostering interdisciplinary collaboration

Transferable Skills

Enhancing non-technical skills applicable across academic and industry roles

Entrepreneurial Skills

To develop a strong entrepreneurial mindset and broaden career opportunities beyond academia



International and Intersectoral Exposure

Encouraging mobility and cross-sector collaboration

Supervision and Mentoring

Ensuring fellows receive holistic and tailored support, Career Development Plan

Network-Wide Training

Facilitating collaboration and skill-building at the program level

„Your Growth. Your Momentum.“

- Choice of secondment can be made during the programme based on individual development needs; it is not a pre-requisite for application.
- Each fellow must complete **one mandatory international secondment** outside Hungary, lasting 1–3 months, during the fellowship.
- Additional secondments may take place at implementing partners or associated partners, inside or outside Hungary, if aligned with the fellow's research objectives and career goals.
- Secondments are **limited to a maximum of one third of the total months** spent implementing the research activities under the action. This limitation does not apply to non-academic placements (e.g. companies, NGOs, government bodies, cultural institutions).
- Freedom to select secondments at institutions outside the current partnership network. New secondment host institutions become Associated Partners of the beneficiary (MTA Secretariat) by **signing a Partnership Agreement before the secondment begins**.
- Co-supervision during secondments to ensure targeted training support.
- An individual agreement with the Associated Partner hosting the secondment may be made regarding on-site, remote, or hybrid formats.

Category	Amount	Comment - salary payments and any applicable allowances will be paid in Hungarian Forint (HUF)
Salary	3,522 EUR/month (gross amount)	before employer's compulsory deduction: 3,980 EUR/month (super-gross amount: that is, gross salary plus social and health insurance); subject to income taxation
Mobility allowance	150 EUR/month (gross amount)	subject to income taxation
Relocation allowance	maximum 3,600 EUR (one-time payment)	based on eligibility, paid in a one-off amount covering the costs of moving to Hungary; will be paid in HUF after the first three months of research at the host research group have been completed, along with the salary applicable at that time as per Relocation Allowance Guidelines; subject to income taxation
Family allowance	300 EUR/month (gross amount)	paid if the researcher has or acquires family obligations during the fellowship, i.e. persons linked to them by (i) marriage, or (ii) a relationship with equivalent status to a marriage recognised by the legislation of the country or region where this relationship was formalised; or (iii) dependent children who are actually being taken care of by the researcher; subject to income taxation
Special needs allowance	to be defined by the REA, on a case-by-case basis	can be requested if necessary and justified by the REA via the Secretariat of MTA, by sending a request to momentum.msca@office.mta.hu

Relocation allowance - See Relocation Allowances Guidelines on eligibility on website: BECOME A FELLOW > Remuneration and Working Conditions

Place of Residence	With Family (€, gross)	Without Family (€, gross)
Non-EU Country	3,600	2,880
EU Country	2,160	1,500

Full social security coverage for the entire recruitment and secondments (including sickness, parental, unemployment and invalidity benefits, pension rights and benefits for accidents at work and occupational diseases).

Home office and flexi-time will be offered according to the usual practices of the host institutions

Research Funding

The following budget will be available at host institutions for the implementation of research projects:

Direct Research Costs: up to 1,800 €/month - Covers consumables, equipment, publications, travel and accommodation (including conferences, workshops, and secondments).

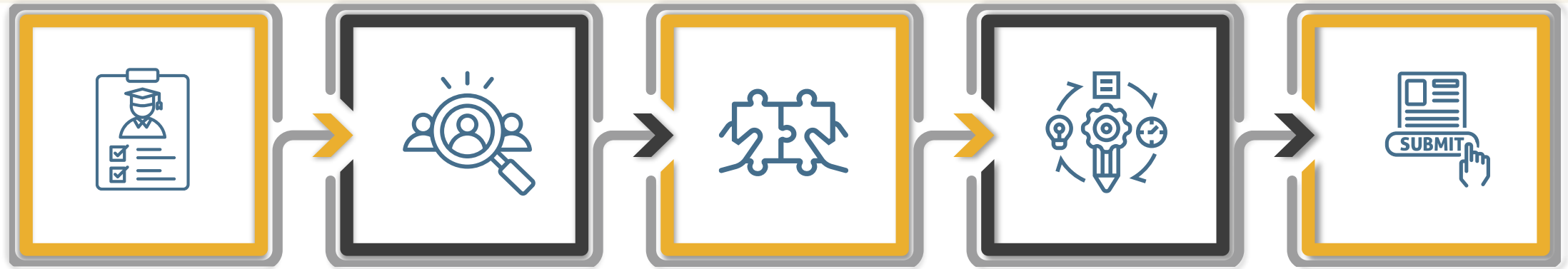
Supports research activities, networking, local training, and travel needs

Indirect Costs: up to 900 €/month.

Details regarding budget planning, utilization, and monitoring will be coordinated with the host institution and supervisor throughout the research project.

APPLICATION PROCESS

Application Process Steps



1 Eligibility & Requirements

- Carefully review all **eligibility criteria and conditions** in the official call document before starting.

2 Engage with Host Research Group

- Explore** participating "Lendület", Momentum research groups.
- Contact** at least one **potential supervisor** to discuss:
- Research idea fit (expertise, focus, infrastructure).
- Ideal 3-year fellowship timing and duration.
- Potential external evaluators (no conflict of interest; be ready to work as external expert).

3 Secure Match

- Finalize research idea.
- Obtain **signed Host Research Entity/Implementing Partner Declaration** if a suitable match is found.

4 Prepare Application

- Use provided **templates and guidelines**.
- Independently prepare research proposal.
- Follow Horizon Europe ethical principles.
- Write entirely in English.
- Fully comply with template format and content requirements.

5 Submit Proposal

- Create account in **MTA Academy Database**.
- Log in to **Electronic Submission Portal** with the same credentials.
- Create application.
- Upload attachments.
- Submit before the deadline:** 31 January 2026, 23:59 CET.

APPLICATION

Application for Momentum MSCA Premium Postdoctoral Fellowship

Call 2 open for application 1 December 2025 – 31 January 2026

Call 2 fellowship start date: 1 September 2026 / 1 October 2026 / 1 November 2026

Call 2 Research Fellowship Details

Postdoctoral positions available in Call 2: 16-18 positions

From Engineering & Technology, Humanities, and Medical Sciences to Natural and Social Sciences, a broad spectrum of disciplines within "Lendület" Momentum Research Groups are included in the Momentum MSCA Postdoctoral Fellowship Programme.

Key Application Resources

- [Official Call for Applications - Call 2](#)
- [Register in AAT Academy Database](#)
- [Electronic Submission Portal](#)
- [User Guide to Electronic Submission Portal](#)
- [Required Documentation for Eligibility Verification](#)
- [Relocation Allowance Guidelines](#)

Webinar Support

Guidance on Submitting Application & Live Q&A

Date: 11 December 2025

Time: 10:00–11:30 AM CET (2:30–4:00 PM IST / 2:00–3:30 PM PKT)

[Event and dial-in details](#)



- Submissions must be through the Electronic Submission Portal only
- Use official templates
- Fully comply with template format and content requirements
- Follow Horizon Europe ethical principles
- Write entirely in English
- Each candidate is permitted to submit only ONE application per call
- No application fee required
- Submit before the deadline: 31 January 2026, 23:59 CET

1 Eligibility Criteria

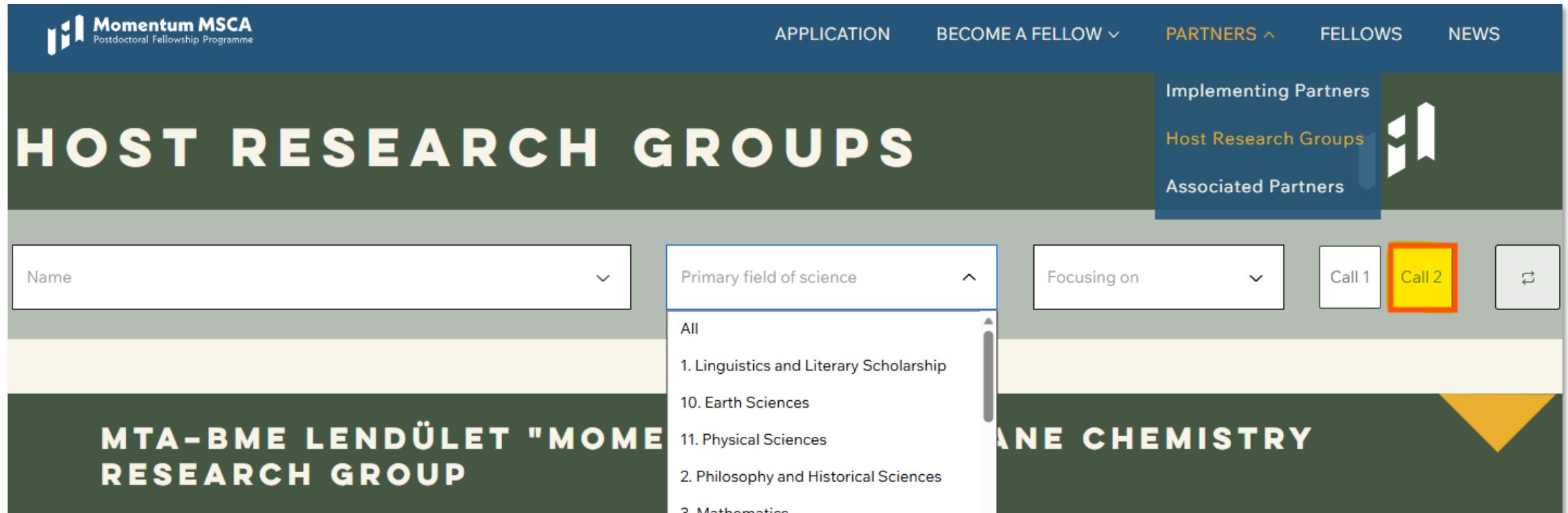
- Candidates of **all nationalities** may apply.
- **All research fields covered by the Momentum host Research Groups** are eligible from all three domains of science.
- Applicants must be **in possession of a doctoral degree** at the deadline of the Momentum MSCA call. Researchers who have successfully defended their doctoral thesis but who have not yet formally been awarded the doctoral degree will also be eligible to apply. The successful defence must be unconditional (no further requirements/corrections that need to be addressed) and take place before the call deadline.
- A **mobility rule** will be applied: applying researchers must not have resided or carried out their main activity (work, studies, etc.) in Hungary for more than 12 months in the 3 years immediately before the call's deadline. Mobility rule is related to your residence or main activity and not to your nationality.*
- Researchers who are already being employed (permanently or temporarily) at one of the Momentum (Lendület) research group host entities at the Call deadline are **not eligible to apply**.
- **Supporting documentation** will be requested and checked before contracting.

*Compulsory national service, short stays such as holidays and time spent as part of a procedure for obtaining refugee status under the Geneva Convention (1951 Refugee Convention and the 1967 Protocol) are not considered.

2 Engage with Host Research Group

Research under the Momentum MSCA Premium Postdoctoral Fellowship Programme can only be conducted within participating 'Lendület' (Momentum) research groups.

Filter to „**CALL 2**”



The screenshot shows the Momentum MSCA website's 'HOST RESEARCH GROUPS' section. The top navigation bar includes links for APPLICATION, BECOME A FELLOW, PARTNERS, FELLOWS, and NEWS. A dropdown menu for 'PARTNERS' is open, showing 'Implementing Partners', 'Host Research Groups' (highlighted), and 'Associated Partners'. Below the header, there are several filter boxes: 'Name' (with a dropdown arrow), 'Primary field of science' (with an upward arrow and a list of fields), 'Focusing on' (with a dropdown arrow), 'Call 1', 'Call 2' (highlighted with a red box), and a refresh button. The 'Primary field of science' dropdown list includes: All, 1. Linguistics and Literary Scholarship, 10. Earth Sciences, 11. Physical Sciences, 2. Philosophy and Historical Sciences, and 3. Mathematics. At the bottom, a banner for 'MTA-BME LENDÜLET "MOME RESEARCH GROUP' is visible, along with a partially visible 'ANE CHEMISTRY' banner.

Momentum MSCA
Postdoctoral Fellowship Programme

APPLICATION BECOME A FELLOW PARTNERS FELLOWS NEWS

Implementing Partners
Host Research Groups
Associated Partners

HOST RESEARCH GROUPS

Name Primary field of science Focusing on Call 1 Call 2

All
1. Linguistics and Literary Scholarship
10. Earth Sciences
11. Physical Sciences
2. Philosophy and Historical Sciences
3. Mathematics

MTA-BME LENDÜLET "MOME RESEARCH GROUP

ANE CHEMISTRY

2 Engage with Host Research Group

Engage with a Preferred Supervisor (Early contact recommended):

Research Fit: Discuss the technical alignment of your research idea with the host group's expertise and infrastructure (equipment, lab resources, data access, facilities, supervision).

Synergy: Discuss how your research idea builds upon, complements, or links to the Momentum research group's work.

Fellowship Details: Discuss the ideal 3-year fellowship timeline and duration.

External Evaluators: Discuss potential external evaluators (no conflict of interest; be ready to suggest suitable experts).

Mutual Expectations: Discuss any specific expectations and questions you may have.

Tip: Set up a live, online meeting with audio and video enabled.

Note: Each candidate is permitted to submit only ONE application per call

2 External Evaluators – Conflict of Interest

An external evaluator has a Conflict of Interest if:

Related to the Applicant/Host Research Group:

- They are currently working for or directly benefit from the work of the applicant's host research group or institution.
- They have been employed or contracted by the applicant's host research group or institution within the last 3 years.
- They have a close collaborative history (e.g., joint publications, projects) with the applicant's proposed supervisor(s) within the 3 years.
- They stand to directly or indirectly benefit financially or professionally if the proposal is successful.

Related to the Proposal:

- They were involved in the preparation of the proposal being evaluated.
- They are involved in a competing proposal submitted to the same call.

Personal Relationships:

- They have a close family or personal relationship with the applicant or a representative of host research group.

Professional Roles:

- They are a director, trustee, partner, or involved in the management of either the applicant's current institution or the proposed host institution.

Other Potential Bias:

- Any other situation that might reasonably be perceived as creating a bias, or the appearance of a bias, in their evaluation.

Attachments to be Uploaded

Main page	List of applications	Application	Attachments	Report list	Report	Re															
<div> Print Upload/modify </div>																					
Name of the applicant:		Jane Momentum																			
Date of birth, year, month, day:		1988.01.01.																			
User ID:		momentum.jane																			
Title of the application:		Title of my application																			
Scientific section:		Philosophy and Historical Sciences																			
Application submitted:		2025.04.02: 10:17																			
Attached documents																					
<table border="1"> <thead> <tr> <th>Attachment type</th> <th>Templates</th> </tr> </thead> <tbody> <tr> <td>* Research proposal:</td> <td rowspan="6"></td> </tr> <tr> <td>* Narrative CV of the applicant:</td> </tr> <tr> <td>* Data management plan:</td> </tr> <tr> <td>* Application form:</td> </tr> <tr> <td>Ethics self-assessment:</td> </tr> <tr> <td>* Host research entity declaration:</td> </tr> <tr> <td colspan="2">* PhD certificate or other certificate that the Doctoral Council agreed to awarding the PhD degree:</td> </tr> <tr> <td colspan="2">* Attachment as proof of eligibility under the mobility rule:</td> </tr> <tr> <td colspan="2">Proof on English proficiency:</td> </tr> </tbody> </table>							Attachment type	Templates	* Research proposal:		* Narrative CV of the applicant:	* Data management plan:	* Application form:	Ethics self-assessment:	* Host research entity declaration:	* PhD certificate or other certificate that the Doctoral Council agreed to awarding the PhD degree:		* Attachment as proof of eligibility under the mobility rule:		Proof on English proficiency:	
Attachment type	Templates																				
* Research proposal:																					
* Narrative CV of the applicant:																					
* Data management plan:																					
* Application form:																					
Ethics self-assessment:																					
* Host research entity declaration:																					
* PhD certificate or other certificate that the Doctoral Council agreed to awarding the PhD degree:																					
* Attachment as proof of eligibility under the mobility rule:																					
Proof on English proficiency:																					

Templates and Attachments

Templates in Electronic Submission Portal (Downloads) and on Website, under APPLICATION

Application Submission Requirements

General Guidelines

- Always refer to the Official **Call for Applications – Call 2** document for detailed instructions and requirements.
- Use official templates (available from 01 December also in Electronic Submission Portal)
- Follow Horizon Europe ethical principles
- Write entirely in English
- Fully comply with template format and content requirements
- Submit before the deadline: 31 January 2026, 23:59 CET

Submission Conditions

- Each candidate is permitted to submit only ONE application per call
- No application fee required
- Submissions must be through the Electronic Submission Portal only

Submission Steps

1. Create your user ID and password in the MTA Academy Database
2. Log in to the Momentum MSCA Programme Electronic Submission Portal using the same credentials
3. Prepare your application using the official templates:

- [Momentum MSCA Application Form](#)
- [Momentum MSCA Data Management Plan](#)
- [Momentum MSCA Ethics Self-assessment](#)
- [Momentum MSCA Host Research Entity Declaration](#)
- [Momentum MSCA Narrative CV](#) *
- [Momentum MSCA Research Proposal](#)

Templates

* Read more about [Active Research Years \(FTE\) calculation](#) in the FAQ.

3 Secure Match

Finalize Research Idea: Refine your research idea based on discussions with your preferred supervisor.

Declaration Template: Download the **Host Research Entity/Implementing Partner Declaration template**.

Obtain Signed Declaration: Secure a signed Host Research Entity/Implementing Partner Declaration if a suitable match is found. (**Requires three signatures:** Head of Host Research Entity, Financial Director of Host Research Entity, and Principal Investigator of Host Research Group).

Signatures Format: Signatures can be obtained on paper, then scanned and uploaded as a PDF. In this case, the Host Institution must ensure that the original signed document is sent by post prior to application deadline.

Electronic Signature: Alternatively, electronic signatures are accepted. For electronic signatures, only qualified electronic signatures with a timestamp from the following providers will be accepted: NISZ, NETLOCK, Microsec (e-Szignó). The PDF file must also contain the signature panel.

Upload Declaration: Upload the signed document as a PDF attachment of your application in the Electronic Submission Portal.

Important Notes:

The supervisor may decide not to host your research. They can refuse to provide the Host Research Entity Declaration.

Receiving a signed Host Research Entity Declaration is a prerequisite for applying but does not guarantee selection.

Momentum MSCA Programme – Call 2		
Host Research Entity / Implementing Partner Declaration		
Name of the Applicant:		
Application Title:		
Start of Research (please select only one option):	<input type="checkbox"/> 1 September 2026 <input type="checkbox"/> 1 October 2026 <input type="checkbox"/> 1 November 2026	Length of Research (type number of months, minimum 12, maximum 36):
Name of the Host Research Entity/Implementing Partner:		

The Host Research Entity / Implementing Partner supports the above mentioned application and candidate to participate in the Momentum MSCA Programme and, in the case of a successful evaluation and selection process, is committed to providing the necessary support and resources to fulfil the obligations stated in the Partnership Agreement.

To this end, the Host Research Entity / Implementing Partner, for the above stated period of research, shall:

- Employ postdoctoral fellow joining the Momentum host research group under the Momentum MSCA Postdoctoral Fellowship Programme as per the terms of the existing or future Momentum MSCA Partnership Agreement.
- Ensure that all employment conditions, remuneration, and benefits for the selected postdoctoral candidate align with the terms recorded in the Partnership Agreement.
- Commit to providing all necessary information and support to the Secretariat of MTA, Hungarian Academy of Sciences when assisting candidate in obtaining visas, work permits, and residence permits, including ensuring that the employment offer /contract is signed on time and providing the necessary Hosting Agreement ("Befogadási nyilatkozat").

The Host Research Entity / Implementing Partner further declares that these commitments shall remain unchanged throughout the entire fellowship, regardless of any organisational, legal, or structural changes, including dissolution with assignment of a legal successor.

Date: _

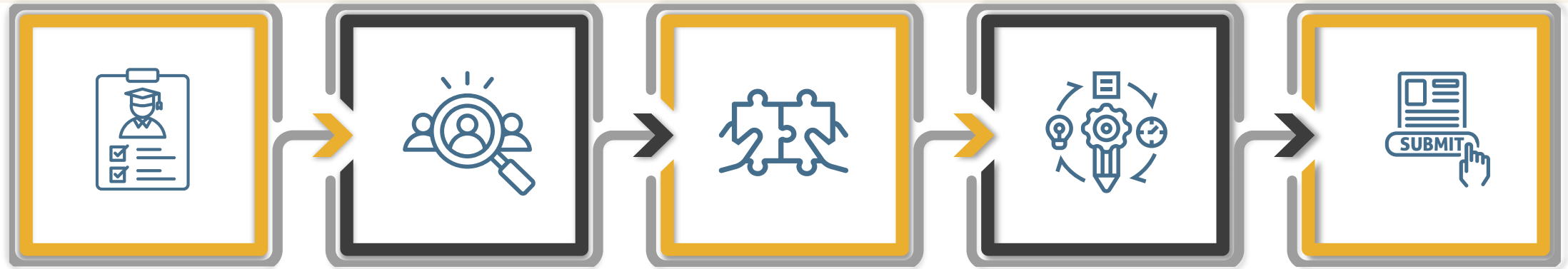
Authorized Signatures and Official Stamp of the Host Research Entity (Implementing Partner):

Signature	
Name of Head of the Host Research Entity/Implementing Partner	

Signature	
Name of Financial Director of the Host Research Entity/ Implementing Partner	

Signature	
Name of the Momentum Host Research Group	
Name of Principal Investigator of the Momentum Host Research Group	

Application Process Steps



1 Eligibility & Requirements

- Carefully review all **eligibility criteria and conditions** in the official call document before starting.

2 Engage with Host Research Group

- Explore** participating "Lendület", Momentum research groups.
- Contact** at least one **potential supervisor** to discuss:
- Research idea fit (expertise, focus, infrastructure).
- Ideal 3-year fellowship timing and duration.
- Potential external evaluators (no conflict of interest; be ready to work as external expert).

3 Secure Match

- Finalize research idea.
- Obtain **signed Host Research Entity/Implementing Partner Declaration** if a suitable match is found.

4 Prepare Application

- Use provided **templates and guidelines**.
- Independently prepare research proposal.
- Follow Horizon Europe ethical principles.
- Write entirely in English.
- Fully comply with template format and content requirements.

5 Submit Proposal

- Create account in **MTA Academy Database**.
- Log in to **Electronic Submission Portal** with the same credentials.
- Create application.
- Upload attachments.
- Submit before the deadline:** 31 January 2026, 23:59 CET.

4 Prepare Application

User Guide to Electronic Submission Portal

Key Application Resources

- [Official Call for Applications - Call 2](#)
- [Register in AAT Academy Database](#)
- [Electronic Submission Portal](#)
- [User Guide to Electronic Submission Portal](#)
- [Required Documentation for Eligibility Verification](#)
- [Relocation Allowance Guidelines](#)

Momentum MSCA Premium Postdoctoral Fellowship Programme – Application Guide



To apply, first register in the MTA Academy database. The credentials created will be used for login to the Electronic Submission Portal.

We recommend submitting applications on a desktop using Chrome or Edge for the best experience.

The portal provides step-by-step guidance, with instructions and tooltips displayed throughout the process to assist applicants in completing their submission smoothly. Follow the instructions carefully to ensure a successful application. Let's get started!

1

Go to <https://momentummsca.mta.hu/application> and under **Key Application Resources**, select [Register in MTA Academy Database](#) to begin your registration.

4 Prepare Application – Guidance on Documentation

Key Application Resources

- [Official Call for Applications - Call 2](#)
- [Register in AAT Academy Database](#)
- [Electronic Submission Portal](#)
- [User Guide to Electronic Submission Portal](#)
- [Required Documentation for Eligibility Verification](#)
- [Relocation Allowance Guidelines](#)

Tip:

We never request copies of personal public documents like ID cards or passports. Instead, we offer secure alternatives, such as providing document numbers and undergoing virtual verification.

Applicants must ensure that their public documents are valid at the time of application and will remain valid for virtual validation. Importantly, they must present the same original documents in person at the time of signing the employment contract.

Guidance on Required Documentation for Eligibility Verification and Allowances Momentum MSCA Programme Second call

1

Applicant must provide accurate information about their identity, eligibility for application and family status at the time of application. Inaccuracies may impact the allowance amount and eligibility

I. Proof of doctoral degree or successful defense of doctoral thesis

Applicants must be in possession of a doctoral degree by the deadline of the Momentum MSCA Programme call (31st January, 2026 for Call 2). Researchers who have successfully defended their doctoral thesis but have not yet been formally awarded the degree are also eligible to apply. The defense must be unconditional (i.e., no further requirements or corrections that need to be addressed) and must take place before the application deadline.

Supporting documentation must be uploaded as an attachment in PDF format at the time of application. The original document will be requested for validation and must be presented during the selection and contracting process.

II. Mobility rule – Place of residence

Don't forget to **print and sign your Application Form** before uploading it as a PDF!
An Ethics Self-Assessment is required only if ethics issues are identified in the Ethics Issues table of the Application Form.

page 1 out of 2

4 Prepare Application – Documents, Attachments

Narrative CV of the Applicant

(Limited to **5 pages** using normal margins, Times New Roman font type, 12 pt font size, single line spacing. **Please delete the sections highlighted in grey.**)

Personal details

Surname of the Applicant:			
First name of the Applicant:			
Researcher unique identifier(s) (such as ORCID, Research ID, etc.):			
URL for web site:			
PhD awarded (year):		Active Research Years (FTE)*:	

Active Research Years (FTE): State the total number of years you have actively engaged in research since the award of your PhD (or equivalent), calculated in full-time equivalent (FTE). Periods of career break, maternity, paternity or parental leave, long-term sick leave, national or military service, unemployment, non-research employment, or time spent outside main research activities should be deducted from the total Full-Time Equivalent (FTE) research period.

[Link](#) to FAQ on our programme website

Frequently asked questions

< 100SE

PROGRAM CHARACTERISTICS

ELIGIBILITY

APPLICATION

What does Active Research Years (FTE) mean?

Active Research Years (FTE) refers to the **total amount of time** you have **actively carried out research** since the award of your PhD, expressed in full-time equivalent (FTE).

Only periods in which you were **actively engaged in research activities** are counted.

Any period not spent on research must be deducted. According to Horizon Europe MSCA rules, the following can be excluded:

- **Maternity leave:** 18 months - i.e. 548 days - per child born after the PhD award date, or the exact duration of maternity leave taken, whichever is longest.
- **Paternity/parental leave:** Documented parental leave taken for each child born after the PhD award date.
- **Long-term sick leave:** Periods longer than 30 days.
- **Compulsory national/military service.**
- **Career breaks or unemployment.**
- **Research in a non-associated Third Country** (only for European Postdoctoral Fellowships and only for EU/Associated Country nationals or long-term residents).
- **Time not spent on research**, including:
 - Periods in **non-research jobs** (fully deducted).
 - In research positions, **documented non-research duties** - such as **teaching not linked to research** or administrative tasks - deducted proportionally based on evidence (e.g., work contracts, job descriptions).

Your final FTE value should reflect the **actual full-time equivalent research experience** accumulated after your PhD.

Basic data of the applicant:

Total elapsed time since PhD awarded: 96 months = 8 years

Category	Description	Duration (months)	Calculation	Deduction (months)	Notes
Sick leave	Long-term sick leave, no research activity	6.0	$6 \times 100\%$	6.0	Full time period deducted
Non-research duties	Teaching unrelated to research (30% non-research time)	36.0	36×0.30	10.8	Part time period deducted
Total deductions	Sum of all deductible periods	—	$6.0 + 10.8$	16.8	—
Active research time	Total elapsed time minus deductions	$96.0 - 16.8$	—	79.2	ARY = 6.6 years FTE

4 Prepare Application – Documents, Attachments

Mandatory Attachments:

- **PhD Certificate or a document confirming** the Doctoral Council's approval to award the PhD degree.
- Proof of **eligibility under the mobility rule and Family allowance** documentation



Mobility_rule_family_NAME

Optional Attachment:

Proof of English Proficiency

If your degree certificate states that studies or exams were completed in English, no further proof is needed.

If not, additional proof is required, even if English is your native language.

Acceptable proof includes:

- Diploma supplement, transcript, or official confirmation from the awarding institution showing that studies or the PhD defence were conducted in English.
- A summary of the PhD dissertation in English or a defence report confirming it was conducted in English.
- A statement from a previous or current academic institution or employer confirming that work, research, or teaching was conducted in English.
- A signed statement if English is the applicant's native language, accompanied by the number of an official identification document confirming nationality (no scan or copy required)
- Internationally recognized certificates demonstrating a proficiency level equivalent to C1 of the Common European Framework of Reference for Languages (CEFR) (e.g. IELTS Academic min. 6.5, TOEFL iBT min. 95, Cambridge English C1 Advanced or higher).

5 Submit Proposal

You can save, close, and reopen your application for editing as many times as needed before you click the Finalize and Submit button.

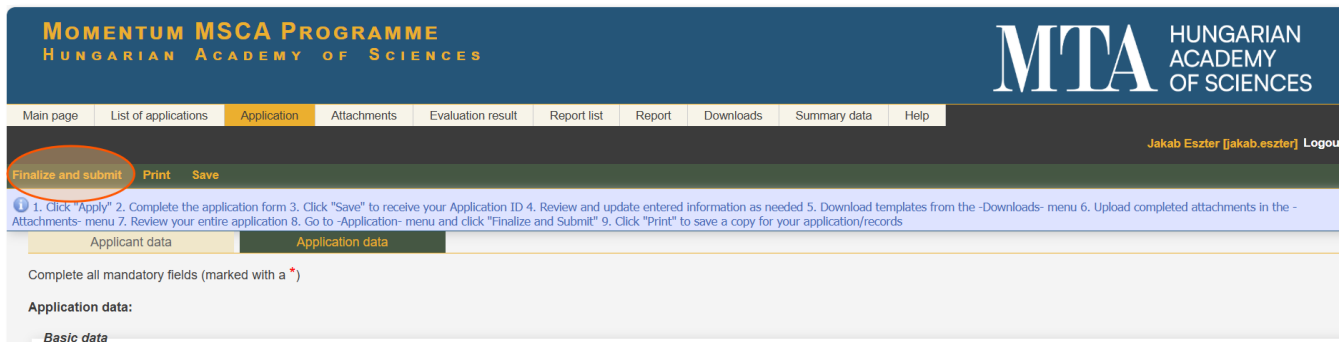
Only **applications and attachments submitted in English, through the Electronic Submission Portal before the deadline** will be considered for evaluation.

Once submitted, the application cannot be reopened.

Applications submitted after the deadline or through alternative channels (e.g., email) will not be considered.

One application per applicant per call is allowed. If multiple applications are submitted, only the first submitted application will be acknowledged and evaluated.

Finalize and submit your application no later, than Call 2 deadline: 31 January 2026, 23:59 CET

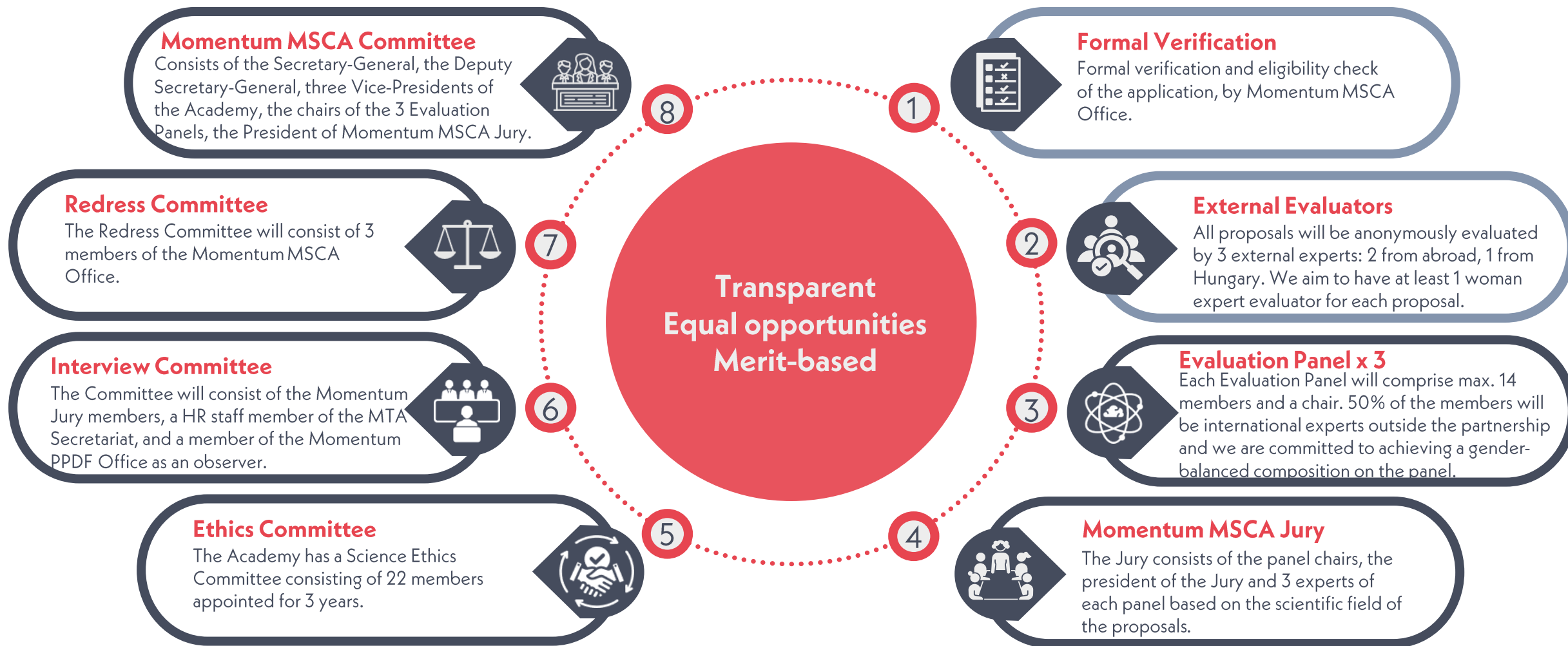


Tips:

- To avoid last-minute issues, aim to submit your application a few days before the 31 January 2026 deadline. This will give you time to address any unexpected issues and ensure a smooth submission process.
- For questions regarding the submission of applications, applicants may **contact the Momentum MSCA Programme team at momentum.msca@office.mta.hu until 28 January 2026, 14:00 CET.**

Autogenerated confirmation email will be sent upon submission.

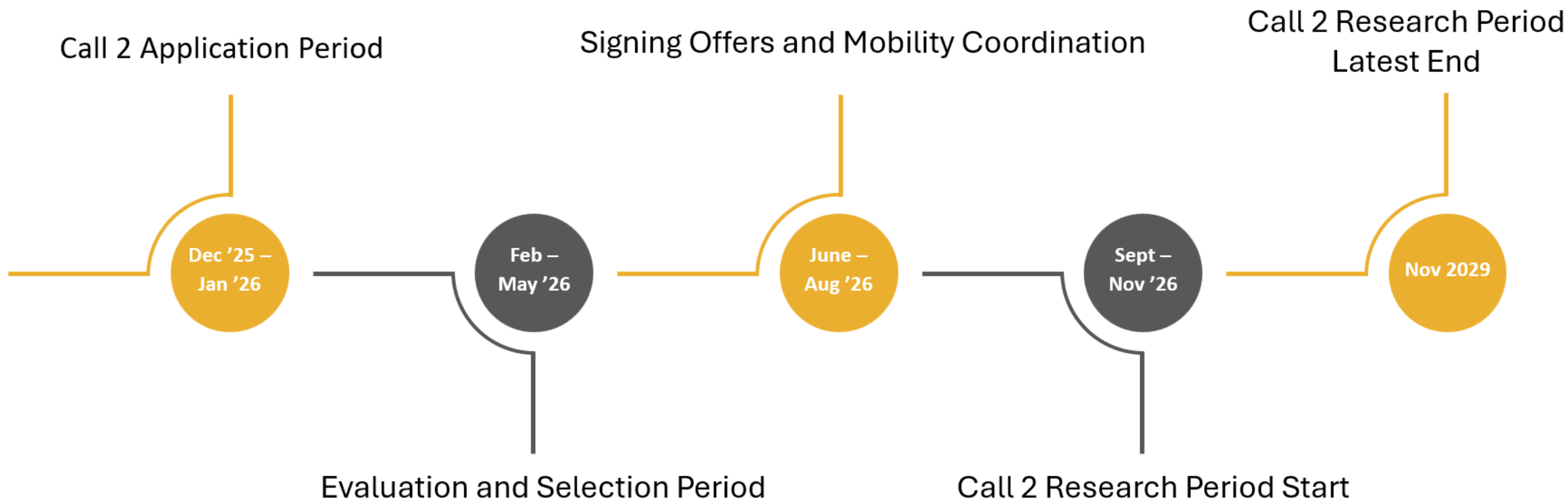
EVALUATION AND SELECTION PROCESS



Evaluation Criteria and Sub Criteria

Criteria and sub-criteria are detailed in the table below, each item is graded from 0 to 5, half marks may be given.
 The maximum score is 25, overall threshold is at 17.

Criteria	Subcriteria	Weight	Threshold
Quality of Applicant			
Track record	<ul style="list-style-type: none"> • Academic records • Scientific results in the past 5 years (incl. publications, patents, grants, awards, conference participations, etc.) • Teaching, supervision, knowledge transfer activities (in the past 5 years) • International mobility experiences, project participations in the past 5 years • Intersectoral experiences (if relevant) 	35%	3
Potential for career development	<ul style="list-style-type: none"> • Impact of the project on the career development of the researcher: short-, medium- and long- term career perspectives 	15%	
Quality of the Research Proposal			
Excellence	<ul style="list-style-type: none"> • Quality and pertinence of the project's research and innovation objectives (and the extent to which they are ambitious, and go beyond the state of the art) • Clarity of the research methodology • Quality, originality, innovative aspects and interdisciplinarity (if relevant) of the research projects 	30%	3
Dissemination and Impact	<ul style="list-style-type: none"> • Planned communication and dissemination activities; • Scientific, societal, economic/ technological impact of the project 	10%	
Implementation	<ul style="list-style-type: none"> • Quality and effectiveness of the workplan; • Feasibility; • Match between the project and the selected host(s) 	10%	



Always refer to the official call document for authoritative information.

(mta.hu, momentummsca.mta.hu)





Question:

Can I join any research group in Hungary within the programme?

Answer:

Only **participating "Lendület" (Momentum) Research Groups** can host postdoctoral fellows in the programme. These groups operate within institutions - our Implementing Partners - that have joined the programme by signing a Partnership Agreement in advance. You can find profiles of the participating Host Research Groups on the programme website.



Question:

I'm a postdoctoral researcher currently working at a department within an Implementing Partner institution and affiliated with a Host Research Group. My salary is paid by the department. Am I eligible to apply for the Momentum MSCA Fellowship?

Answer:

No. Researchers already employed at one of the Momentum Implementing Partners at the call deadline are not eligible to apply for the fellowship.



Question:

I'm committed to another project until January 2027? Can I start my Momentum MSCA fellowship later than the September - November 2026 window?

Answer:

The research period for Call 2 **must start between September and November 2026**, as this guarantees that the mandatory 36 months of the fellowship period can be completed until the MSCA programme end, November 2029.



Question:

Can I discuss my research proposal with the potential supervisor during the application process?

Answer:

Yes. It's important to discuss your research idea with the PI to ensure technical fit and confirm the group can support your project with the necessary facilities, data, or expertise. However, the proposal must be written independently by the applicant - without involvement of the PI.



Question:

How flexible is the research topic? Can applicants propose their own research ideas?

Answer:

Yes. Applicants are expected to propose their own original research ideas—this is a key aim of the programme, which supports new scientific directions and collaborations. However, there must be a clear technical fit with the host Momentum Research Group's expertise and infrastructure (e.g. lab facilities, equipment, data access, supervision). Your proposal should also build on, complement, or in some way meaningfully link to the group's ongoing research and lifecycle.



Question:

I have the opportunity to start working at the host institution after the application deadline but before the fellowship decision is made. Can I still apply for the Momentum MSCA and continue working there?

Answer:

Yes, as long as you are not employed at the host institution at the time of the application deadline and you meet the mobility rule (i.e. you have not lived or worked in Hungary for more than 12 months in the 3 years before the call deadline), you remain eligible to apply and continue working at the institution.



Question:

Are secondments part of the Momentum MSCA fellowship? Do I need to arrange them before applying?

Answer:

Yes. Each fellow **must complete one international secondment** (outside Hungary) lasting 1–3 months during the fellowship. You can also pursue optional secondments at Implementing Partners or Associated Partners, depending on your development and research needs and preferences. To become an Associated Partner, organizations must align with the programme's objectives and sign a Partnership Agreement with the Secretariat of MTA. Identifying secondment hosts is not required at the time of application.

Contact us at:
momentummsca.mta.hu
momentum.msca@officce.mta.hu

Stay Connected!



Wishing you success in your application!



Momentum MSCA Postdoctoral Fellowship Programme (Momentum PPDF) has received funding from the European Union's research and innovation programme under the HORIZON-MSCA-2023-COFUND grant agreement no 101179854.